



**Clinical Liaison**  
Erica Brader, LVN



**Team Physician**  
Jason Abney, DO



**Social Worker**  
Michelle Kimball, MSW

**HOSPICE MEDICAL DIRECTOR**

- Co-certifies the terminal prognosis with the attending physician
- Leads the interdisciplinary team in the development of a plan of care
- Provides consultation to other physicians regarding hospice care

**ATTENDING PHYSICIAN**

- Certifies the terminal prognosis
- Assesses patient needs, manages symptoms, prescribes non-curative treatments
- Directs and approves the plan of care
- Coordinates care with the interdisciplinary team

**RN, LVN, LPN**

- Assess patient and family needs
- Develop plan of care to meet needs
- Coordinate care with attending physician
- Coordinate team visits and ensure implementation of approved plan of care
- Ensure symptom control and pain management
- Provide patient/family teaching as needed
- The LVN/LPN in partnership with the RN does the following: provide direct nursing care to patient and family

**SOCIAL WORKER**

- Assess patient and family emotional, social and financial needs
- Develop a plan of care to meet identified needs
- Provide direct counseling or refer patients and families to appropriate community agencies
- Provide supportive emotional counseling to patient and family
- Assist in completion of advanced directives, mortuary arrangements, funeral planning and facility placement

IMMEDIATE FAMILY

PATIENTS  
OR  
FAMILIES

SILVERADO FAMILY

FRIENDS

**CNA/CHHA (hospice aides)**

- Provide direct personal care to patient
- Provide comfort measures
- Report identified needs to RN Case Manager
- Provide emotional support to patient and family

**SPIRITUAL COUNSELOR**

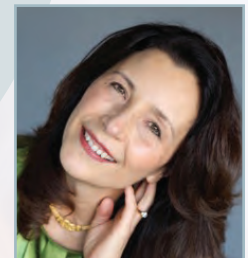
- Assess patient and family spiritual needs
- Develop a plan of care to meet identified needs
- Provide spiritual counseling
- Assist with memorial preparations
- Provide referrals to clergy of all faiths

**VOLUNTEERS**

- Provide companionship support to patient and family
- Provide needed non-medical services, letter writing, errands and respite time for family
- Provide support at time of death and during bereavement



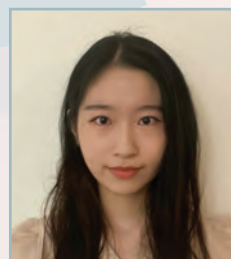
**Case Manager**  
Amy Vaccaro, RN



**Spiritual Counselor**  
Gayle Heuser, MA, MM, SD



**Certified Home Health Aide**  
Esmeralda Acevedo



**Volunteer**  
Yedan Hong

# NEWSLETTER

## Youth Soccer Club

Active on and off the field

A local assisted living in Orange County hosted the 10-11 year old soccer players of the Liverpool International Football Academy located in Irvine, CA. Coach Davin reached out to the Volunteer Services Manger at Silverado to offer his teams final practice of the year time slot, in order to volunteer their time.

The team gathered bringing their holiday spirit and joy, along with gingerbread cookies, and houses to decorate.

A huge thank you to Coach Francis Davin and team Liverpool International Football Club!

If you are interested in volunteering your time, please call (888) 328-5660.



## Healthcare Dates of Recognition

Cervical Cancer Awareness Month

Glaucoma Awareness Month

National Birth Defects Awareness Month

National Blood Donor Month

Thyroid Awareness Month

National Activity Professionals Week | 1/22-1/28

World Leprosy Week | 1/29-2/4

World Braille Day | 1/4

National Pharmacist Day | 1/12

National IV Nurse Day | 1/25

World Leprosy Day | 1/29

## Social Work Intern's Reflection

Social work graduate student- volunteers are an integral part of the Hospice Team. They are committed to providing quality care, whilst they develop in their career. However, like many hospice professionals, a student can feel emotionally touched during their work in helping those with life-limiting illness. This is one student's reflection in serving her patient.



### **I Wasn't Ready**

Kristen Sasse, MSW Candidate

I wasn't ready to say goodbye ; To turn our visits into memories

I wasn't ready to leave your side; To never feel your hand in mine again

I wasn't ready to let you go; Even as you spoke about it being time to go

I wasn't ready for this side of life ; The side where I got to meet you ; The side where you left me behind

You taught me love is found in walks, and trees, and cups of coffee with a friend every day

You taught me life is pure and exciting, ; But that beyond it there's something more

All the talks about philosophy, psychology, and the beauty and power of nature

That's all here with me, the one left living

I wasn't ready to say goodbye ; To see you for the last time ; To remember and to grieve

I wasn't ready for that phone call; For the emotions; For the ache inside that place in my heart your memory will always be

I wasn't ready for the world to keep moving ; For my case load to keep growing; For the healing and the strength that followed ; As I learned to navigate a new world

I wasn't ready; But because of you, now I am

## Essential Oils for All

by Valerie Lomeli, Regional Volunteer Manager

The lotions and room sprays we offer for our patients are often requested and refilled when a replenishment is needed. Silverado receives wonderful feedback from both families and staff at assisted living and skilled nursing homes. While these are being used for our patients the benefits can often linger providing a comforting environment for those who visit. The use of essential oils are great for all.

January is a time when many are beginning to slow down from the holiday season. A time for reflection and planning for the new year. If you are like me, you look forward to hanging up a new calendar or purchasing a new yearly planner, to begin setting goals and intentions for the new year. While we reevaluate different aspects of our lives, consider using aromatherapy while journaling, meditating, documenting visits or even studying to focus and ease stress. Essential oils are benefited from topically using a lotion, carrier oil, or an oil diffuser. Many oil diffusers can be purchased almost anywhere now, from \$15– \$30. If you would like to sample an essential oil inform your Silverado Team member. For more details call (888) 328-5660.

### Oils for Concentration



Orange



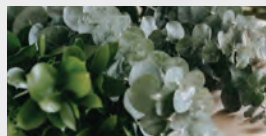
Lavender



Ylang Ylang



Frankincense



Eucalyptus



Bergamot

## CONTACT US

24-hour line: (888) 328-5660

Fax: (949) 653-0452

Referral line: (800) 507-9726

Volunteer inquiries: (888) 328-5660

Visit us online with our 24/7 Live Chat Line: [silveradohospice.com](https://www.silveradohospice.com)



If you would like to leave one of your favorite team members a praise, you may do so on our Yelp page. Search **Silverado Hospice Orange County**